

PWSL 2018 APPAREL ORDER SHEET

Name: _____

Email: _____

ATC BLACK INDOOR V-NECK T-SHIRT



100% Polyester, tagless, double needle sleeves and hem & embroidered with PWSL colored logo on the front breast.	\$15.00
Circle SIZE: XS S M L XL 2XL	
Options to personalize the back of the t-shirt	
10" Vinyl Number only:	\$ 5.00
3.5" Vinyl Name & 10" Vinyl Number:	\$15.00
SUB-TOTAL	

LADIES' General Sizing Guide

Size	XS	S	M	L	XL	2XL
Numeric Size	2	4-6	8-10	12-14	16	18-20
Bust	32"-34"	35"-36"	37"-38"	39"-41"	42"-44"	45"-47"
Waist	24"-25"	26"-27"	28"-30"	30"-32"	33"-35"	36"-38"
Hip	33"-35"	35"-37"	37"-39"	39"-41"	42"-44"	45"-47"
Sleeve Length - CB	30"-30 1/2"	30 1/2"-31"	31 1/2"-32"	32 1/2"-33"	33 1/2"-34"	34"-34 1/2"

ATC WHITE INDOOR V-NECK T-SHIRT



100% Polyester, tagless, double needle sleeves and hem & embroidered with PWSL colored logo on the front breast.	\$15.00
Circle SIZE: XS S M L XL 2XL	
Options to personalize the back of the t-shirt	
10" Vinyl Number only:	\$ 5.00
3.5" Vinyl Name & 10" Vinyl Number:	\$15.00
SUB-TOTAL	

LADIES' General Sizing Guide

Size	XS	S	M	L	XL	2XL
Numeric Size	2	4-6	8-10	12-14	16	18-20
Bust	32"-34"	35"-36"	37"-38"	39"-41"	42"-44"	45"-47"
Waist	24"-25"	26"-27"	28"-30"	30"-32"	33"-35"	36"-38"
Hip	33"-35"	35"-37"	37"-39"	39"-41"	42"-44"	45"-47"
Sleeve Length - CB	30"-30 1/2"	30 1/2"-31"	31 1/2"-32"	32 1/2"-33"	33 1/2"-34"	34"-34 1/2"

FOAM TRUCKER HAT



100% Polyester, foam front, structured, soft mesh side and back, 3 1/2" crown, 5 Panel, Double Plastic Tab adjust, One size & PWSL logo on the front.	\$7.00
COLOR OF HAT :	
SUB-TOTAL	



BLACK HOODED SWEATSHIRT



PWSL logo printed on the front of a Gildan adult hooded sweatshirt, 50% Cotton /50% polyester preshrunk with drawstring at neckline & pouch pocket.	\$30.00
Circle SIZE: S M L XL 2XL 3XL	
Option to personalize the back of the sweatshirt	
3" Vinyl Name along the back:	\$ 5.00
	SUB-TOTAL

Size Specification

Sizes	Width (CM)	Length (CM)
S	51	69
M	56	71
L	61	74
XL	66	76
2XL	71	79
3XL	76	81

GREY FULL ZIP HOODIE



PWSL logo printed on the front breast, 50% cotton/50% Polyester preshrunk with drawstring at neckline & pouch pocket	\$35.00
Circle SIZE: S M L XL 2XL 3XL	
Option to personalize the back of the sweatshirt	
3" Vinyl Name along the back:	\$ 5.00
	SUB-TOTAL

Measurement	Width	Length
Adult		
Small	19.3" (49 cm)	27.2" (69 cm)
Medium	21.3" (54 cm)	28" (71 cm)
Large	23.2" (59 cm)	29.1" (74 cm)
X-Large	25.2" (64 cm)	29.9" (76 cm)
2X-Large	27.2" (69 cm)	31.1" (79 cm)
3XL	29.1" (74 cm)	31.9" (81 cm)

DYNAMIC HEATHER FLEECE



Fabric is 100% polyester fleece, 3 pannel unline hood withdrawstring, thumbhole at cuffs PWSL colored logo on the front	\$40.00
Circle SIZE: S M L XL 2XL 3XL 4XL	
Option to personalize the back of the sweatshirt	
3" Vinyl Name along the back:	\$ 5.00
SUB-TOTAL	

L2000 - ATC™ Dynamic Heather Fleece Hooded Ladies' Sweatshirt								
L2000 - ATC™ Dynamic Heather Fleece Hooded Ladies' Sweatshirt								
Measurement	XS	S	M	L	XL	2XL	3XL	4XL
Chest, Flat Measure	31.5"	33.5"	35.5"	37.5"	39.5"	41.5"	43.5"	45.5"
Chest, Full Measure	33"	35"	37"	39"	41"	43"	45"	47"
Body Length from MTB (to Hood)	28"	29"	30"	31"	32"	33"	34"	35"
Body Length (to Hem)	28.5"	29.5"	30.5"	31.5"	32.5"	33.5"	34.5"	35.5"
Standard measurements in inches. Refer to "How to Measure" guide for detailed information on measurement techniques.								
L2000 - ATC™ Dynamic Heather Fleece Hooded Ladies' Sweatshirt								
Measurement	XS	S	M	L	XL	2XL	3XL	4XL
Neckline, Flat	12"	12.5"	13"	13.5"	14"	14.5"	15"	15.5"
Neckline, Full	12.5"	13"	13.5"	14"	14.5"	15"	15.5"	16"
Waist	28"	29"	30"	31"	32"	33"	34"	35"
Body Length	28.5"	29.5"	30.5"	31.5"	32.5"	33.5"	34.5"	35.5"



GILDAN OPEN BOTTOM SWEATPANTS

Black open bottom sweatpants, 50/50 fleece blend fabric, drawstring waistband, with pockets. PWSL will be printed down the leg.

\$25.00

Circle SIZE:

S M L XL 2XL

SUB-TOTAL

Size Specification

Sizes	Waistband (IN)	Inseam (IN)
S	13	29
M	14	29.5
L	15	30
XL	16	30.5
2XL	18	31



BLACK SWEATPANTS WITH POCKETS

Black closed cuffed sweatpants with pockets, 95%cotton/5% polyester. Heavy weight fleece. Elasticized ankle cuffs, draw cord waitband. PWSL will be printed down the leg.

\$35.00

Circle SIZE:

S M L XL 2XL

SUB-TOTAL

Size Specification

Sizes	Waistband (IN)	Inseam (IN)
S	13	29
M	14	29.5
L	15	30
XL	16	30.5
2XL	18	31



ANVIL GREY/BLACK UNISEX LIGHT TERRY JOGGER

60% polyester, 40% combed ring-spun cotton, High stitch density for smoother printing surface Semi-fitted with side seam construction. Multi-needle waistband with exposed flatcord Welt pockets 1x1 rib spandex on legs cuffs PWSL in black down the leg (grey). White for the black
CHOOSE (circle) COLOR: Black Grey

\$35.00

Circle SIZE:

S M L XL 2XL

SUB-TOTAL

Sizes	Inseam Length	Waist
XS	29.5"	26"
S	30"	28"
M	30.5"	30"
L	31"	32"
XL	31.5"	34"
2XL	32"	36"

BLACK WINDBREAKER



Black windbreaker embroidered with PWSL colored logo on the front breast. Fabric is 100% polyester with a water resistant finish. The hood can be roll-up and tucked away. <i>*Embroidered area will not be water resistant</i>	\$40.00
Circle SIZE: XS S M L XL 2XL 3XL	
SUB-TOTAL	

Product Specifications ?

	XS	S	M	L	XL	2XL	3XL
BODY WIDTH	19	20.5	22	23.5	25	26.5	28
FULL BODY LENGTH	25.5	26	26.5	27	27.5	28	28.5
SLEEVE LENGTH	31.5	32.25	33	33.75	34.5	35.25	35.75

Size Chart ?

	XS	S	M	L	XL	2XL	3XL
CHEST	32-34	34-36	36-38	38-41	41-44	44-47	47-50

BLACK RAIN JACKET



Black rain jacket embroidered with PWSL colored logo on the front breast. Fabric is 100% polyester fully seam-sealed with a two-layer waterproof and breathable shell, micro-mesh lining throughout, reflective tape at right-chest and front pockets. The hood can be rolled up & tucked away. <i>*Embroidered area will not be water resistant</i>	\$70.00
Circle SIZE: XS S M L XL 2XL 3XL	
SUB-TOTAL	

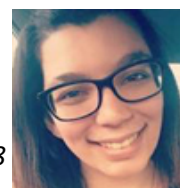
Product Specifications ?

	XS	S	M	L	XL	2XL	3XL
BODY LENGTH	25	26	27	28	29	30	31
BODY WIDTH	19.25	20.25	21.25	22.25	24.25	26.25	28.25
FULL BODY LENGTH	29	30	31	32	33	34	35
SLEEVE LENGTH	31	31.75	32.5	33.25	34.75	36.25	37.75

Size Chart ?

	XS	S	M	L	XL	2XL	3XL
CHEST	31-33	33-35	36-38	39-41	42-44	46-48	50-52

****Orders must be submitted to
Melissa Salvati
(melissa@pwsf.ca)
by: August 10th, 2018**



TOTAL:	
METHOD OF PAYMENT:	
CASH/CHEQUE/ETRANSFER:	